



PART NUMBER

PFF3-102

DESCRIPTION

CAST ARM WISHBONE BUSH

INSTALLATION GUIDE

Contents (parts per pack):

- 4 x Polyurethane Bushes
- 1 x PTFE/Silicone Grease
- 4 x Stainless Steel Sleeves
- 8 x Nylon Washers

Please read the complete fitting instructions and check package components before fitment. These fitting instructions are to be used as a guide and in conjunction with workshop manual.

It is recommended that:

- all work to be carried out by a licensed technician;
- all safety precautions adhered to;
- wheel alignment to be checked and adjusted as required after any suspension work.
- All fasteners must be tensioned to manufacturer's torque settings.



Fitting Instructions:

1. Remove the original rubber bush from the wishbone arm, including the original outer shell.
2. Clean any dirt and corrosion from the bore of the arm and file off any sharp edges.
3. Fit the polyurethane part into the arm from the outside face of the arm so that the smaller diameters of the bushes will be facing each other from the front and rear position (Figure 1).
4. Apply some of the supplied grease into the bore of the polyurethane bush and insert the stainless steel sleeve into the bore of the bush so that it extrudes equal amounts from each side.
5. Place one of the supplied nylon washers on each end of the sleeve.
6. Refit the arm back onto the vehicle and tension all hardware to manufacturers recommended torque settings.

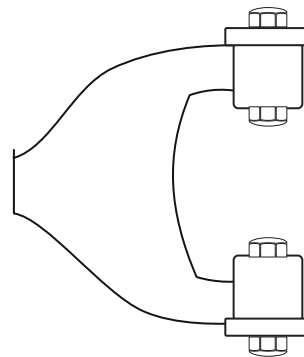


Figure 1

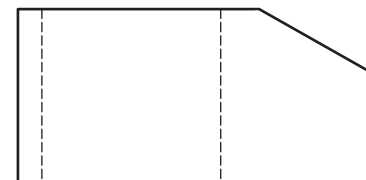
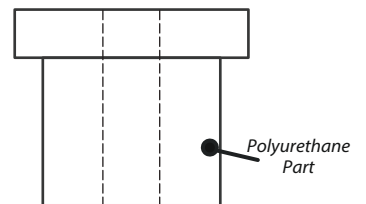
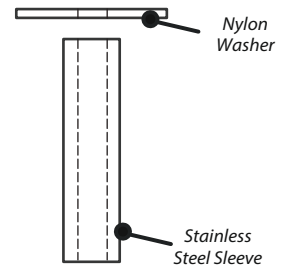


Figure 2



Figure 3