

POWERFLEX®

PART NUMBER

PFR85-1015

DESCRIPTION

GEARBOX MOUNTING BUSH

INSTALLATION GUIDE

Contents (parts per pack):

2 x Polyurethane Bushes 1 x Stainless Steel Sleeve

1 x PTFE/Silicone Grease

Please read the complete fitting instructions and check package components before fitment. These fitting instructions are to be used as a guide and in conjunction with workshop manual.

It is recommended that:

- all work to be carried out by a licensed technician;
- all safety precautions adhered to;
- wheel alignment to be checked and adjusted as required after any suspension work.
- All fasteners must be tensioned to manufacturer's torque settings.

Fitting Instructions:

1. Remove the original bush including the outer shell.
2. Push both bushes into the bracket (see fig. 2). The flat section of each bush half should be positioned against the flat mounting bracket (see fig. 1).
3. Apply the supplied grease to the bore of the bushes and push the Stainless steel sleeve into the bore until it sits flush with the end faces.
4. Tension all hardware to manufacturers recommended torque settings.

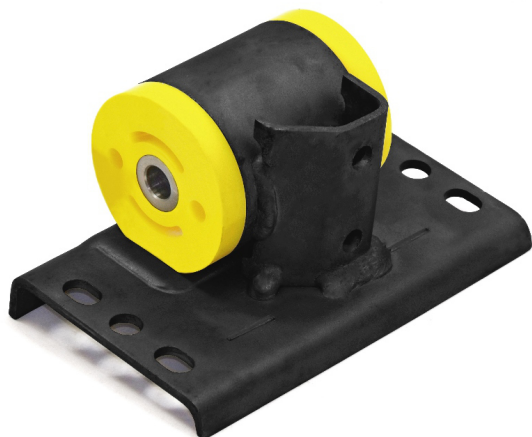


Figure 1 - Fitted Image of Gearbox Mount Bush

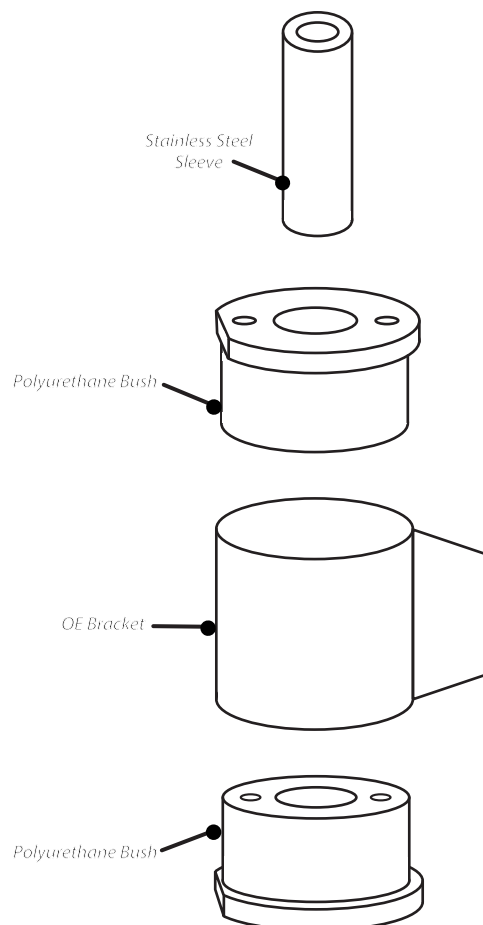


Figure 2 - Exploded View of Gearbox Mount Bush